

SILVERSCREEN

High Performance Fabric



TEXTSTYLE



SILVERSCREEN BY VEROSOL

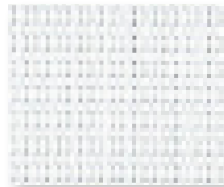
SilverScreen is a metalized interior solar shade fabric that carries the highest solar reflectance in the market. It is available in both 2% and 4% openness. The secret of its superior and outstanding performance lies in its construction.

SilverScreen is backed with an ultra-fine layer of aluminum, dramatically improving solar energy control, while demonstrating excellent view through and glare control.

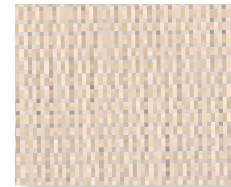
FEATURES

- Highest unrivalled solar reflectance in the market of 85%
- Color independent fabric – SilverScreen has virtually the same solar and optical performance across the entire color range
- Made of durable PVC coated fiberglass
- Flame Retardant
- Available in two openness factors - 2% and 4%
- Available in 10 neutral colors
- Versatile – can be used in roller shades and panel track applications
- Improves energy savings and comfort

COLORS



WHITE | 2%, 4%



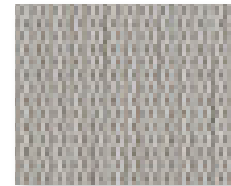
BEIGE | 2%, 4%



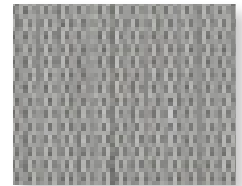
LIGHT GRAY | 2%, 4%



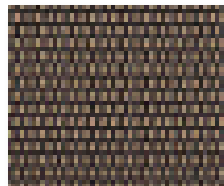
DARK BEIGE | 4%



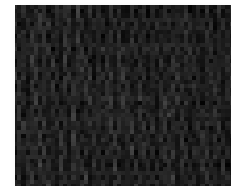
MISTY GRAY | 2%, 4%



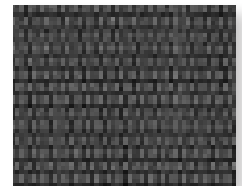
STEEL GRAY | 2%, 4%



BRONZE | 2%, 4%



CHOCOLATE BROWN | 2%, 4%



DARK GRAY | 2%, 4%



BLACK | 2%, 4%

Bringing Fabrics to Life

USA | AUSTRALIA | EUROPE textstyle.com



Walker Specialties, Inc.
50 Messina Drive
Braintree, MA 02184
617-333-3220
info@walkerspecialties.com

www.walkerspecialties.com



©2022 Textstyle

SILVERSCREEN

High Performance Fabric



TEXTSTYLE

SPECIFICATIONS

| | 2% | 4% |
|-----------------------------|---|------------|
| Composition | 36% Fiberglass, 64% PVC with Aluminum backing | |
| Weight | 11.8oz/yd ² (400g/m ²) | |
| Thickness | 0.020in (.50mm) | |
| Openness Factor | Average 2% | Average 4% |
| Light fastness | Grade 8 (Blue Wool Scale) | |
| Average length | 36 yd/roll (33m) | |
| Width | 110" (2.9m) | 94" (2.4m) |
| Railroadable | No | |
| Cleaning | Lightly vacuum to remove surface dust. | |
| Environmental Standards | GREENGUARD Gold, OEKO-TEX Standard 100, Health Product Declaration, ISO 14001 | |
| Fungal/Bacterial Resistance | ASTM E2180, G21, G22 | |
| Fire Classifications | NFPA 701, NFP 92503 specification M1, BS 5867 Part 2 Type B, CA Title 19 | |

THERMAL AND OPTICAL FACTORS

| | Glazing Perf. | White | | Beige | | Light Gray | | Dark Beige | Misty Gray | Steel Gray | | Bronze | | Choc. Brown | Dark Gray | | Black | |
|---|---------------|-------|------|-------|------|------------|------|------------|------------|------------|------|--------|------|-------------|-----------|------|-------|------|
| | | 2% | 4% | 2% | 4% | 2% | 4% | 4% | 4% | 2% | 4% | 2% | 4% | 4% | 2% | 4% | 2% | 4% |
| Solar Reflection Outside | | 82% | 77% | 82% | 76% | 85% | 77% | 76% | 75% | 82% | 76% | 81% | 75% | 76% | 81% | 76% | 85% | 76% |
| Light Transmission | | 3% | 6% | 3% | 5% | 3% | 5% | 5% | 5% | 3% | 5% | 3% | 5% | 4% | 3% | 4% | 3% | 4% |
| Openness Factor | | 2% | 4% | 2% | 4% | 2% | 4% | 4% | 4% | 2% | 4% | 2% | 4% | 4% | 2% | 4% | 2% | 4% |
| IR Emissivity (metal side) | | 0.05 | 0.16 | 0.05 | 0.16 | 0.05 | 0.16 | 0.16 | 0.16 | 0.07 | 0.16 | 0.10 | 0.16 | 0.16 | 0.10 | 0.16 | 0.10 | 0.16 |
| Color Rendering Index | | 100 | 100 | 100 | 99 | 100 | 99 | 99 | 100 | 100 | 100 | 100 | 99 | 100 | 100 | 99 | 99 | 99 |
| High Performance Glazing (reference glazing D EN14501) | | | | | | | | | | | | | | | | | | |
| Light Transmission | 60% | 2% | 4% | 2% | 4% | 2% | 4% | 4% | 3% | 2% | 4% | 2% | 4% | 3% | 2% | 3% | 2% | 3% |
| Solar Heat Gain Coefficient (SHGC) | 32% | 12% | 14% | 12% | 14% | 12% | 14% | 14% | 14% | 12% | 14% | 13% | 14% | 14% | 13% | 14% | 13% | 14% |
| U-value (W/m ² K) | 1.1 | 0.7 | 0.7 | 0.7 | 0.7 | 0.7 | 0.7 | 0.7 | 0.7 | 0.7 | 0.7 | 0.7 | 0.7 | 0.7 | 0.7 | 0.7 | 0.7 | 0.7 |
| Insulating Glazing (reference glazing C EN14501) | | | | | | | | | | | | | | | | | | |
| Light Transmission | 79% | 3% | 5% | 3% | 5% | 3% | 5% | 5% | 4% | 3% | 5% | 3% | 5% | 4% | 3% | 4% | 3% | 4% |
| Solar Heat Gain Coefficient (SHGC) | 59% | 22% | 25% | 22% | 26% | 22% | 25% | 26% | 26% | 23% | 26% | 24% | 26% | 26% | 24% | 26% | 24% | 25% |
| U-value (W/m ² K) | 1.2 | 0.7 | 0.7 | 0.7 | 0.7 | 0.7 | 0.7 | 0.7 | 0.7 | 0.7 | 0.7 | 0.7 | 0.7 | 0.7 | 0.7 | 0.7 | 0.7 | 0.7 |



OEKO-TEX®
CONFIDENCE IN TEXTILES
STANDARD 100
Tested for harmful substances.
www.oeko-tex.com/standard100



FR



LEAD FREE



FORMALDEHYDE
FREE



FRAGRANCE
FREE



ENERGY
SAVING

Bringing Fabrics to Life

USA | AUSTRALIA | EUROPE textstyle.com



Walker Specialties, Inc.
50 Messina Drive
Braintree, MA 02184
617-333-3220
info@walkerspecialties.com



©2022 Textstyle

www.walkerspecialties.com