

OMNIASCREEN

High Performance Fabric



TEXTSTYLE



OMNIASCREEN

OmniaScreen is the high-quality solar screen that will transform your building into a healthy comfort zone. OmniaScreen effectively provides natural shade, helping you create the perfect indoor climate and save on energy. With its impressive energy savings, OmniaScreen is a sustainable investment. OmniaScreen is the metalized version of our top selling 3000 NET fabric.

OmniaScreen offers fantastic view through. A PVC screen with a 2x2 basket weave, OmniaScreen has a 3% openness. This beautiful transparent screen will show the inside of your building as open and spacious, enhancing the living and working atmosphere.

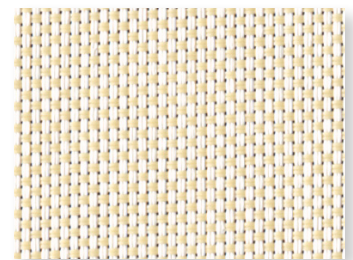
FEATURES

- Solar reflectance up to 74%
- Healthy, phthalate-free screen
- Great value / performance ratio
- Available in 6 neutral colors
- Clear view-through and robust look and feel
- Beautiful basket weave construction
- Excellent thermal and visual comfort
- Uniform gray color always facing out regardless of the color facing the room

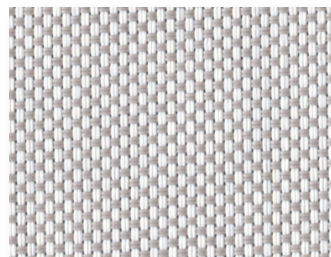
COLORS



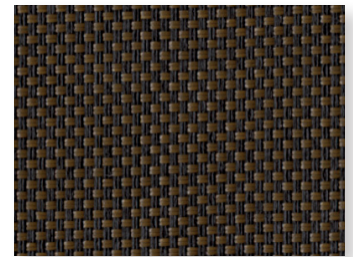
WHITE/WHITE



WHITE/BEIGE



WHITE/GRAY



CHARCOAL/BRONZE



CHARCOAL/DARK GRAY



CHARCOAL/CHARCOAL

Bringing Fabrics to Life

USA | AUSTRALIA | EUROPE textstyle.com



Walker Specialties, Inc.
50 Messina Drive
Braintree, MA 02184
617-333-3220
info@walkerspecialties.com



©2023 Textstyle

www.walkerspecialties.com

OMNIASCREEN

High Performance Fabric



TEXTSTYLE

SPECIFICATIONS

	3%
Composition	25% Polyester, 75% PVC with Aluminum backing
Weight	13.27 oz/yd ² (450 g/m ²)
Thickness	0.022in (.55mm)
Colorfastness	Grade 8
Average length	24 yd/roll (22m)
Width	110" (2.8m)
Cutting	Cold Cutting and Ultrasonic Cutting
Welding	248°F (120°C) to 284°F (140°C), test first
Railroadable	Yes
Cleaning	Lightly vacuum to remove surface dust
Environmental Standards	GREENGUARD Gold, OEKO-TEX Standard 100, Health Product Declaration, ISO 14001
Fire Classifications	NFPA 701, CA Title 19, UK BS 5867 Part 2, French M1

ACOUSTICAL PERFORMANCE

OmniaScreen	NRC RATING*	SAA RATING*
3%	0.15	0.09

*Noise Reduction Coefficient (NRC)
*Sound Absorption Average (SAA) tested to ASTM C423-17

THERMAL AND OPTICAL FACTORS

	Glazing Performance	White/White	White/Beige	White/Gray	Charcoal/Bronze	Charcoal/Dark Gray	Charcoal/Charcoal
Solar Reflection Outside		74%	73%	73%	72%	72%	72%
Light Transmission		6%	5%	5%	5%	5%	5%
Openness Factor		3-4%	3-4%	3-4%	3-4%	3-4%	3-4%
IR Emissivity (metal side)		0.14	0.15	0.15	0.15	0.15	0.15
Color Rendering Index		99	99	99	99	99	99
High Performance Glazing (reference glazing D EN14501)							
Light Transmission	60%	4%	4%	4%	4%	4%	4%
Solar Heat Gain Coefficient (SHGC)	32%	15%	15%	15%	16%	16%	16%
U-value (W/m ² K)	1.1	0.8	0.8	0.8	0.8	0.8	0.8
Insulating Glazing (reference glazing C EN14501)							
Light Transmission	79%	5%	5%	4%	4%	4%	4%
Solar Heat Gain Coefficient (SHGC)	59%	27%	27%	27%	28%	28%	28%
U-value (W/m ² K)	1.2	0.8	0.8	0.8	0.8	0.8	0.8



FR



LEAD FREE



FORMALDEHYDE FREE



PHthalate FREE



FRAGRANCE FREE



ENERGY SAVING

Bringing Fabrics to Life

USA | AUSTRALIA | EUROPE textstyle.com



Walker Specialties, Inc.
50 Messina Drive
Braintree, MA 02184
617-333-3220
info@walkerspecialties.com



©2023 Textstyle

www.walkerspecialties.com