

# 4000 NET

Solar Screen



TEXSTYLE

## 4000 NET

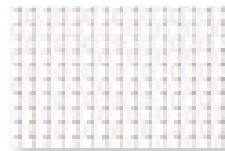
4000 NET Solar Screen fabrics offer a stylish and modern aesthetic for window treatments that minimize the negative effects of the sun, while preserving outward visibility.

4000 NET is similar in appearance to 3000 NET but made of a heavier weight yarn making it ideal for commercial applications as well as exterior treatments.

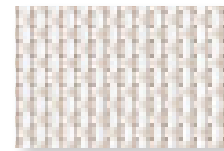
## FEATURES

- A unique manufacturing process delivers technically superior fabrics that are backed by a limited lifetime warranty
- Environmentally friendly and safe
- Flame Retardant
- Available in two openness factors - 3%, 5%
- Available in 13 colors
- Versatile – can be used in roller shades and panel track applications

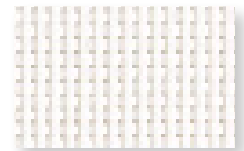
## COLORS



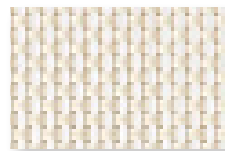
NPE1 DOVE/DOVE



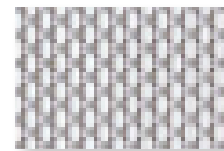
NPE2 DOVE/SAND



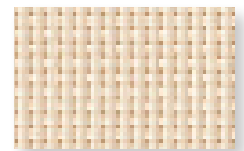
N001 WHITE/WHITE



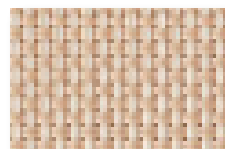
N002 WHITE/BEIGE



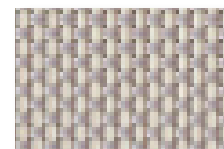
N003 WHITE/GRAY



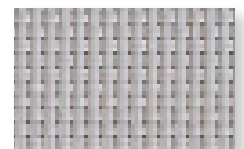
N201 BEIGE/BEIGE



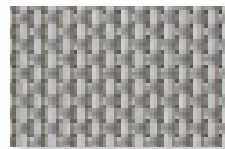
N202 BEIGE/SABLE



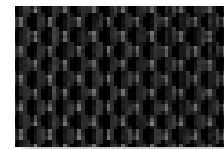
N203 BEIGE/GRAY



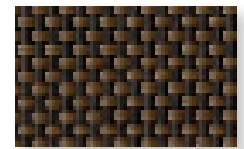
N301 GRAY/GRAY



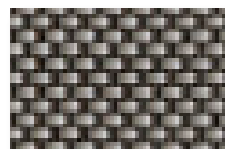
N302 GRAY/DARK GRAY



N901 CHARCOAL/CHARCOAL



N902 CHARCOAL/BRONZE



N903 CHARCOAL/GRAY

Bringing Fabrics to Life

USA | AUSTRALIA | EUROPE [texstyle.com](http://texstyle.com)



Walker Specialties, Inc.  
50 Messina Drive  
Braintree, MA 02184  
617-333-3220  
[info@walkerspecialties.com](mailto:info@walkerspecialties.com)

[www.walkerspecialties.com](http://www.walkerspecialties.com)

 **ROLLEASE  
ACMEDA**

©2023 Texstyle

# 4000 NET

Solar Screen



## SPECIFICATIONS

|                             | 3%   | 5%  |
|-----------------------------|--|---|
| Series                      | 4000 NET   |   |
| Composition                 | 27% Polyester, 73% PVC   |   |
| Openness Factor             | Average 3%   | Average 5%  |
| Weight                      | 16.07oz/yd <sup>2</sup><br>(545 g/m <sup>2</sup> )   | 15.35 oz/yd <sup>2</sup><br>(520 g/m <sup>2</sup> ) |
| Thickness                   | 0.029in (.75mm)  | 0.027 in (0.70mm)                                   |
| Light Fastness              | Grade 8  |   |
| Average length              | 33 yd/roll (30m)   |   |
| Width                       | 98.4" (2.5m), 118" (3m)  |   |
| Cutting                     | Cold, Crush, and Ultrasonic  |   |
| Welding                     | 248°F (120°C) to 284°F (140°C)   |   |
| Railroadable                | Yes  |   |
| Cleaning                    | Lightly vacuum or wipe with dry cloth to remove dust. Spot clean with clean white pencil eraser or gently wipe with warm soapy water and damp sponge. If wet, leave shade down to dry completely. Avoid solvents or test them in inconspicuous area first. |   |
| Fungal/Bacterial Resistance | ASTM E2180, G21, G22   |   |
| Fire Classifications        | NFPA 701, M1, B1, B2, CA Title 19  |   |
| Environmental Standards     | GREENGUARD Gold,<br>Low VOC<0.5mg/m <sup>3</sup> :<br>CDPH Standard Method v1.1-2010,<br>Health Product Declaration,<br>OEKO-TEX Standard 100, ISO 14001   |   |

## THERMAL AND OPTICAL FACTORS

| CODE                   | THERMAL FACTORS        |                  |    |                     |         |         | OPTICAL FACTORS |      |      |
|------------------------|------------------------|------------------|----|---------------------|---------|---------|-----------------|------|------|
|                        | Ts                     | Rs               | As | Shading Coefficient |         |         | Tv              |      |      |
|                        |                        |                  |    | 1/8" CL             | 1/4" CL | 1/4" HA |                 |      |      |
| 3%                     | N001 White/White       | 13               | 68 | 19                  | 8       | 0.29    | 0.31            | 0.30 |      |
|                        | N002 White/Beige       | 11               | 58 | 31                  | 8       | 0.36    | 0.37            | 0.32 |      |
|                        | N003 White/Gray        | 7                | 46 | 47                  | 5       | 0.45    | 0.46            | 0.36 |      |
|                        | N201 Beige/Beige       | 11               | 52 | 37                  | 6       | 0.42    | 0.41            | 0.35 |      |
|                        | N203 Beige/Gray        | 7                | 39 | 54                  | 4       | 0.50    | 0.47            | 0.38 |      |
|                        | N901 Charcoal/Charcoal | 3                | 5  | 92                  | 2       | 0.71    | 0.67            | 0.49 |      |
|                        | N902 Charcoal/Bronze   | 3                | 7  | 90                  | 2       | 0.70    | 0.66            | 0.48 |      |
|                        | 5%                     | N001 White/White | 16 | 67                  | 17      | 11      | 0.32            | 0.33 | 0.32 |
|                        |                        | N002 White/Beige | 14 | 58                  | 28      | 9       | 0.39            | 0.38 | 0.34 |
| N003 White/Gray        |                        | 10               | 45 | 45                  | 8       | 0.47    | 0.46            | 0.38 |      |
| N201 Beige/Beige       |                        | 14               | 51 | 35                  | 11      | 0.44    | 0.43            | 0.37 |      |
| N202 Beige/Sable       |                        | 12               | 47 | 41                  | 9       | 0.46    | 0.45            | 0.38 |      |
| N203 Beige/Gray        |                        | 10               | 39 | 51                  | 8       | 0.51    | 0.49            | 0.40 |      |
| N301 Gray/Gray         |                        | 8                | 31 | 61                  | 7       | 0.56    | 0.54            | 0.43 |      |
| N302 Gray/Dark Gray    |                        | 8                | 23 | 69                  | 8       | 0.62    | 0.59            | 0.45 |      |
| N801 Bronze/Bronze     |                        | 6                | 17 | 77                  | 7       | 0.62    | 0.60            | 0.41 |      |
| N901 Charcoal/Charcoal | 6                      | 5                | 89 | 6                   | 0.73    | 0.69    | 0.51            |      |      |
| N902 Charcoal/Bronze   | 6                      | 7                | 87 | 6                   | 0.72    | 0.68    | 0.50            |      |      |
| N903 Charcoal/Gray     | 6                      | 12               | 82 | 6                   | 0.74    | 0.69    | 0.52            |      |      |



LOW VOC



HEALTH PRODUCT DECLARATION



OEKO-TEX®  
CONFIDENCE IN TEXTILES  
STANDARD 100

Tested for harmful substances.  
www.oeko-tex.com/standard100



14001



9001



LIMITED LIFETIME WARRANTY



FR



LEAD FREE



FORMALDEHYDE FREE



PHTHALATE FREE



FRAGRANCE FREE



ANTI-BACTERIAL



ENERGY SAVING

Bringing Fabrics to Life

USA | AUSTRALIA | EUROPE [textstyle.com](http://textstyle.com)



Walker Specialties, Inc.  
50 Messina Drive  
Braintree, MA 02184  
617-333-3220  
[info@walkerspecialties.com](mailto:info@walkerspecialties.com)

[www.walkerspecialties.com](http://www.walkerspecialties.com)



©2023 Textstyle