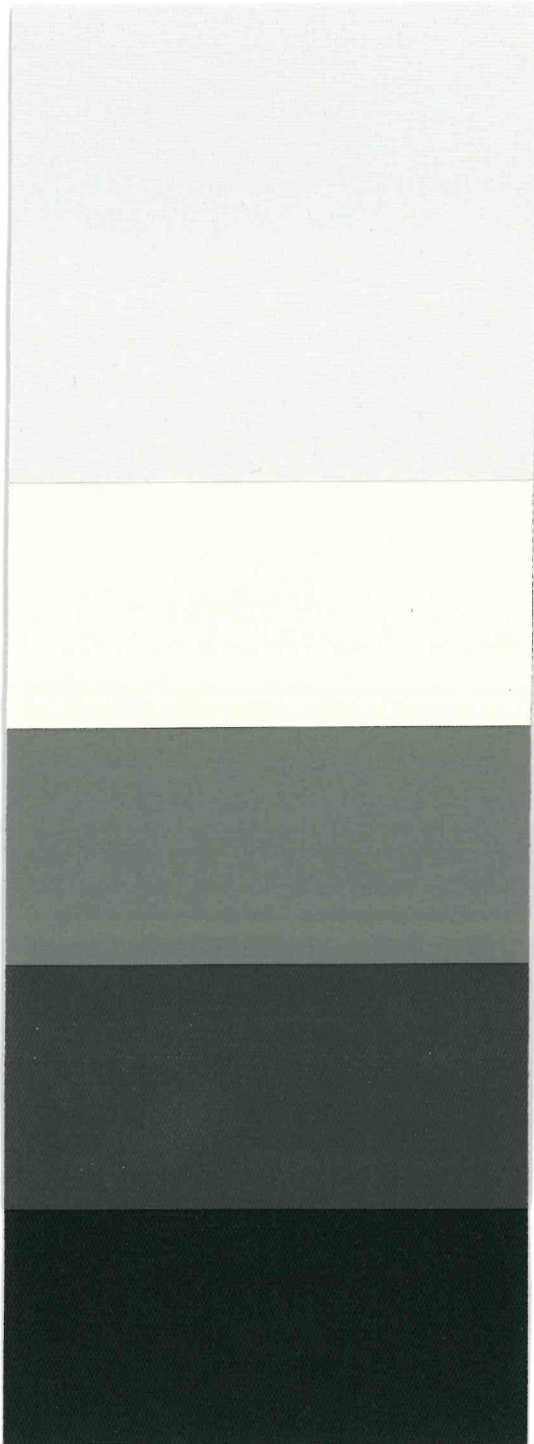


Sparta Twilight™

Privacy | Blackout



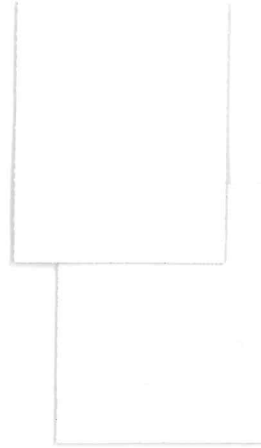
016002
Chalk/White

042002
Gypsum/White

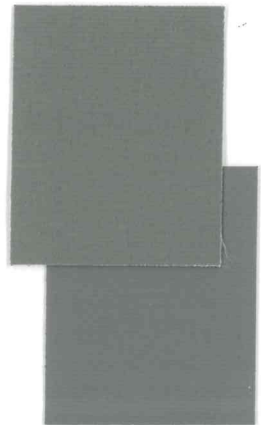
001002
Pewter/White

070002
Emery/White

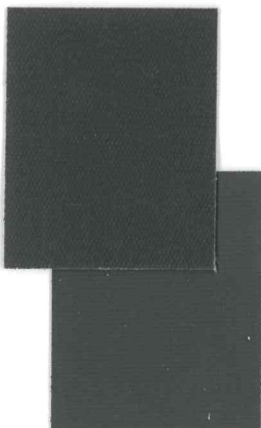
060002
Black/White



002002
White/White



001001
Pewter/Pewter



070070
Emery/Emery

Specifications

Item Number

Openness Factor

Composition

UV Blockage

Standard Packaging

Width

Weight

Thickness

W04942 - White Backing

M04942 - Color Matched Backing

0% - Blackout

33% Polyester | 67% Acrylic

Approximately 100%

Rolls of 33 ly (30 lm)

126 in (320 cm)

9.9 oz/yd² (336 g/m²) ± 10%

0.014 in (0.35 mm) ± 10%

Classifications

Fire Classifications

Bacterial Resistance

Environment

Acoustical Performance

NFPA 701-19 TM#1, California U.S. Title 19,
CAN/ULC-S109-14 Small & Large Flame Test

ASTM E2180

RoHS - Lead Free, GREENGUARD Gold

NRC: 0.00, SAA: 0.02

Sparta Twilight™

W04942 - White Backing

ITEM COLOR SIDE*

016002 Chalk/White street
room

042002 Gypsum/White street
room

001002 Pewter/White street
room

070002 Emery/White street
room

060002 Black/White street
room

M04942 - Color Matched Backing

002002 White/White street
room

001001 Pewter/Pewter street
room

070070 Emery/Emery street
room

FABRIC						FABRIC + GLASS		ILLUMINANCE	
thermal Total Solar			optical			commercial SHGC % Improvement	residential SHGC	Blackout %	Glow %
Rs %	As %	Ts %	Rv %	Tv %					
73	27	0	81	0	63	0.22	100	0	
64	36	0	68	0	55	0.28	100	0	
72	28	0	80	0	63	0.22	99	1	
72	28	0	78	0	61	0.23	99	1	
72	28	0	79	0	63	0.23	100	0	
18	82	0	39	0	37	0.47	100	0	
73	27	0	81	0	63	0.22	100	0	
9	91	0	9	0	18	0.55	100	0	
72	28	0	80	0	63	0.22	100	0	
4	96	0	4	0	16	0.57	100	0	
71	29	0	80	0	63	0.23	89	11	
75	25	0	84	0	66	0.20	89	11	
18	82	0	20	0	24	0.51	100	0	
18	82	0	20	0	24	0.51	100	0	
9	91	0	10	0	18	0.55	100	0	
9	91	0	9	0	18	0.55	100	0	

*Roomside: identified by the fabric side; Streetside: identified by the coated side

Warranty

5 Year Interior

Disinfecting & Cleaning

Remove dust with a soft duster, cloth, sponge or low-suction vacuum. For minor stains clean with a mild dish detergent and lukewarm water using a soft brush, cloth or sponge. For tougher stains and disinfecting instructions visit MermetUSA.com.

Mermet Corporation

5970 N. Main Street | Cowpens, SC 29330

Ph 1.866.902.9647 | info@MermetUSA.com

MermetUSA.com



Scan here for complete fabric resources.



Walker Specialties, Inc.
50 Messina Drive,
Braintree, MA 02184
617-333-3220
info@walkerspecialties.com

www.walkerspecialties.com